

Allianz Thematica

- The Fund aims at long-term capital growth by investing in global equity markets with a focus on theme and stock selection in accordance with environmental and social characteristics. The Fund aims to achieve the Sustainability Key Performance Indicator Strategy (Absolute Threshold) ("KPI Strategy (Absolute Threshold)"). The Fund does not constitute as an ESG fund pursuant to the SFC's circular issued on 29 June 2021.
- The Fund is exposed to significant risks of investment/general market, concentration, thematic-based investment strategy, company-specific, emerging market risks, currency (such as exchange controls, in particular RMB), and the adverse impact on RMB share classes due to currency depreciation.
- The Fund is exposed to sustainable investment risks relating to KPI Strategy (Absolute Threshold) (such as foregoing opportunities to buy certain securities when it might otherwise be advantageous to do so, selling securities when it might be disadvantageous to do so, and/or relying on information and data from third party ESG research data providers and internal analyses which may be subjective, incomplete, inaccurate or unavailable).
- The Fund may invest in financial derivative instruments ("FDI") which may expose to higher leverage, counterparty, liquidity, valuation, volatility, market and over the counter transaction risks. The Fund's net derivative exposure may be up to 50% of the Fund's net asset value.
- This investment may involve risks that could result in loss of part or entire amount of investors' investment.
- In making investment decisions, investors should not rely solely on this material.

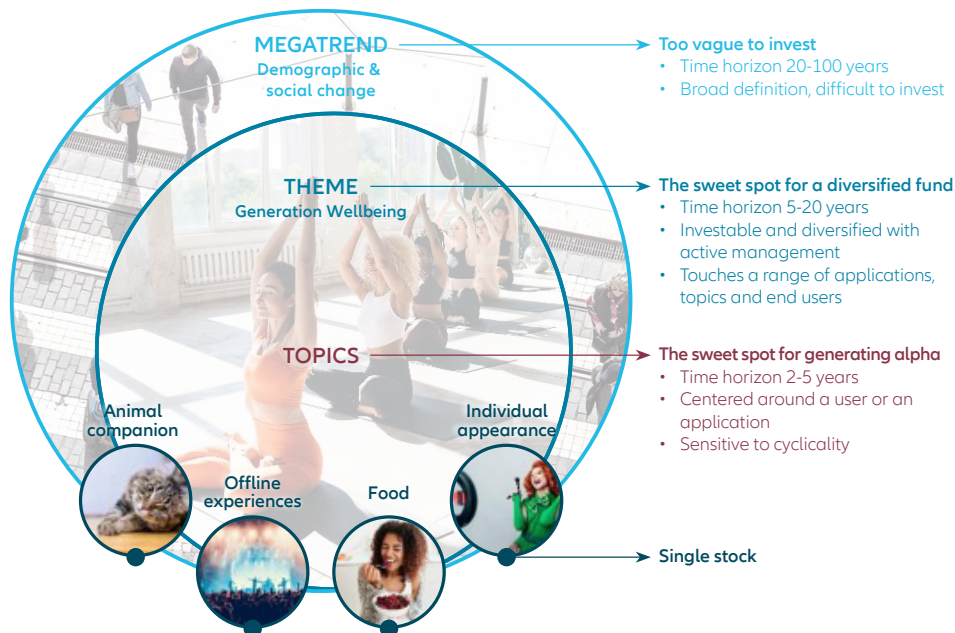
Note: Dividend payments may, at the sole discretion of the Investment Manager, be made out of the Fund's capital or effectively out of the Fund's capital which represents a return or withdrawal of part of the amount investors originally invested and/or capital gains attributable to the original investment. This may result in an immediate decrease in the NAV per share and the capital of the Fund available for investment in the future and capital growth may be reduced, in particular for hedged share classes for which the distribution amount and NAV of any hedged share classes (HSC) may be adversely affected by differences in the interests rates of the reference currency of the HSC and the base currency of the Fund.

Why Allianz Thematica (the "Fund")?

Participate in opportunities arising from structural shifts, typically driven by innovation, demographic change, resource scarcity or urbanisation.



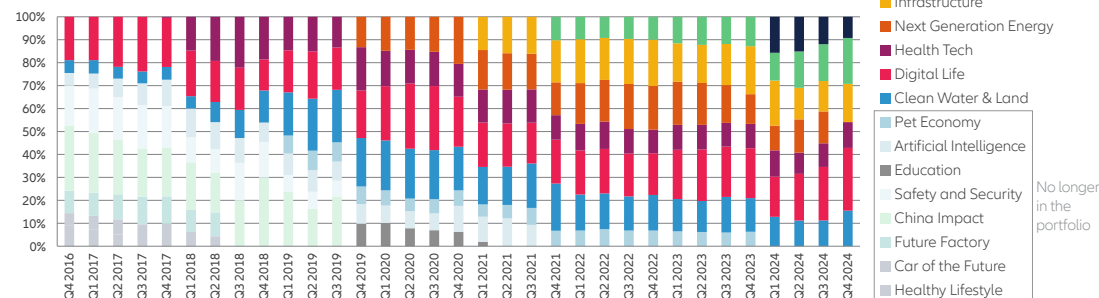
Global Core Multi-Theme Strategy



Source: Allianz Global Investors. A performance of the strategy is not guaranteed and losses remain possible.

A Diversified and Adaptable Multi-Themed Portfolio

Theme allocation (%)



Source: Allianz Global Investors as of 31 December 2024. There is no guarantee that these investment strategies and processes will be effective under all market conditions and investors should evaluate their ability to invest for a long term based on their individual risk profile especially during periods of downturn in the market. The information above is provided for illustrative purposes only, it should not be considered a recommendation to purchase or sell any particular security or strategy or an investment advice.

Different investable themes are influencing our daily life

1. Generation Wellbeing

This theme taps into the potential of a large and increasingly influential generation – Gen Z and the closely related Millennials – to benefit from the structurally changing consumption patterns driven by social and demographic changes.

2. Infrastructure

This theme covers a wide range of raw material manufacturers, construction companies and equipment suppliers.

3. Intelligent Machines

This theme looks at robotics, automation and supporting software.

4. Clean Water and Land

This theme includes companies that improve the water supply, water quality or water efficiency, as well as companies engaging in recycling and waste treatment, as these companies will be in the spotlight.

5. AI Adoption

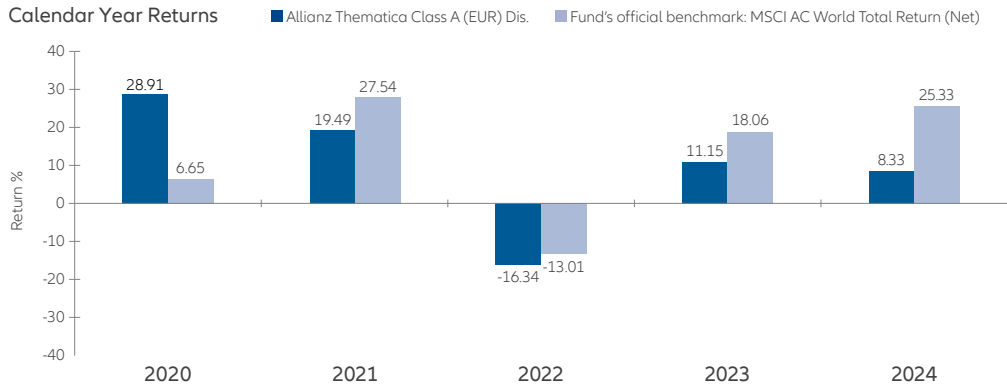
This theme focuses on the next wave of implementation and proliferation of efficiency-enhancing applications based on the recent advancements of artificial intelligence (AI).

6. Digital Finance

This theme captures companies within the evolving financial sector benefitting from fintech, blockchain and decentralised finance developments.

Performance Overview (Class A (EUR) Dis.)

Cumulative Returns	YTD	1 Year	3 Years	5 Years	Since Inception
NAV-NAV (%)	-6.91	-3.88	5.79	40.06	108.69
MSCI AC World Total Return (Net) (%)	-3.93	8.68	33.64	83.48	125.62



Fund performance is calculated in EUR based on NAV-to-NAV basis in denominated currency of the respective share class with gross dividends re-invested. Benchmark performance is calculated in denominated currency of the respective share class. HKD/USD based investors are exposed to foreign exchange fluctuations. Class A (EUR) Dis. Performance Information: -6.91% (YTD 31 May 2025), 8.33% (2024), 11.15% (2023), -16.34% (2022), 19.49% (2021) and 28.91% (2020). Past performance, or any prediction, projection or forecast, is not indicative of future performance.

Fund Details

Share Class^	Inception Date	ISIN Code	Bloomberg Ticker	Annualised Dividend Yield	Ex-Dividend Date
Class A (EUR) Dis.	08/12/2016	LU1479563717	ALZTHMA LX	1.47% ¹	16/12/2024
Class AT (USD) Acc.	25/01/2019	LU1917777945	ALZTHAT LX	N/A	N/A
Class AT (H2-SGD) Acc.	01/08/2019	LU2023250843	ALTAH2S LX	N/A	N/A
Class AMg (USD) Dis.	15/04/2019	LU1974910355	ALTHAMG LX	5.32% ²	15/5/2025
Class AMg (H2-RMB) Dis.	15/07/2019	LU2014482397	ATAMGH2 LX	2.65% ²	15/5/2025
Class AMg (H2-AUD) Dis.	01/08/2019	LU2023250769	ALTHH2A LX	4.81% ²	15/5/2025
Class AMg (H2-SGD) Dis.	01/08/2019	LU2023250504	ALTHH2S LX	3.73% ²	15/5/2025
Class AMg (HKD) Dis.	18/02/2020	LU2106854487	ALZTAHI LX	5.33% ²	15/5/2025

Fund Size ³	USD 3,580.09m
Subscription Fee (Sales Charge)	Up to 5%
Management Fee (All-in-Fee ⁴)	1.90% p.a.

Source: Allianz Global Investors/IDS GmbH/Morningstar, as at 31 May 2025, unless stated otherwise.

- ^ The currency-hedged share classes are not recommended for investors whose base currency of investment is not in respective hedged currencies.
1. Annualised Dividend Yield = Dividend Per Share / Ex-Dividend Date NAV. Positive distribution yield does not imply positive return. Dividend is not guaranteed. Historical dividend yield is not indicative of future dividend payouts.
2. Annualised Dividend Yield = $[(1 + \text{Dividend Per Share} / \text{Ex-Dividend Date NAV})^{12} - 1] \times 100$. The annualised dividend yield is calculated based on the latest dividend distribution with dividend reinvested, and may be higher or lower than the actual annual dividend yield. Positive distribution yield does not imply positive return. Dividend is not guaranteed. Historical dividend yield is not indicative of future dividend payouts.
3. The Fund Size quoted includes all share classes of the Fund.
4. The All-in-Fee includes the expenses previously called management and administration fees.

Information herein is based on sources we believe to be accurate and reliable as at the date it was made. We reserve the right to revise any information herein at any time without notice. No offer or solicitation to buy or sell securities and no investment advice or recommendation is made herein. In making investment decisions, investors should not rely solely on this material but should seek independent professional advice. Investment involves risks, in particular, risks associated with investment in emerging and less developed markets. Past performance is not indicative of future performance. Investors should read the offering documents for further details, including the risk factors, before investing. This material and website have not been reviewed by the Securities and Futures Commission of Hong Kong. Issued by Allianz Global Investors Asia Pacific Limited. Allianz Global Investors Asia Pacific Limited (32/F, Two Pacific Place, 88 Queensway, Admiralty, Hong Kong) is the Hong Kong Representative and is regulated by the Securities and Futures Commission of Hong Kong. (54/F, One Island East 18 Westlands Road, Quarry Bay, Hong Kong).